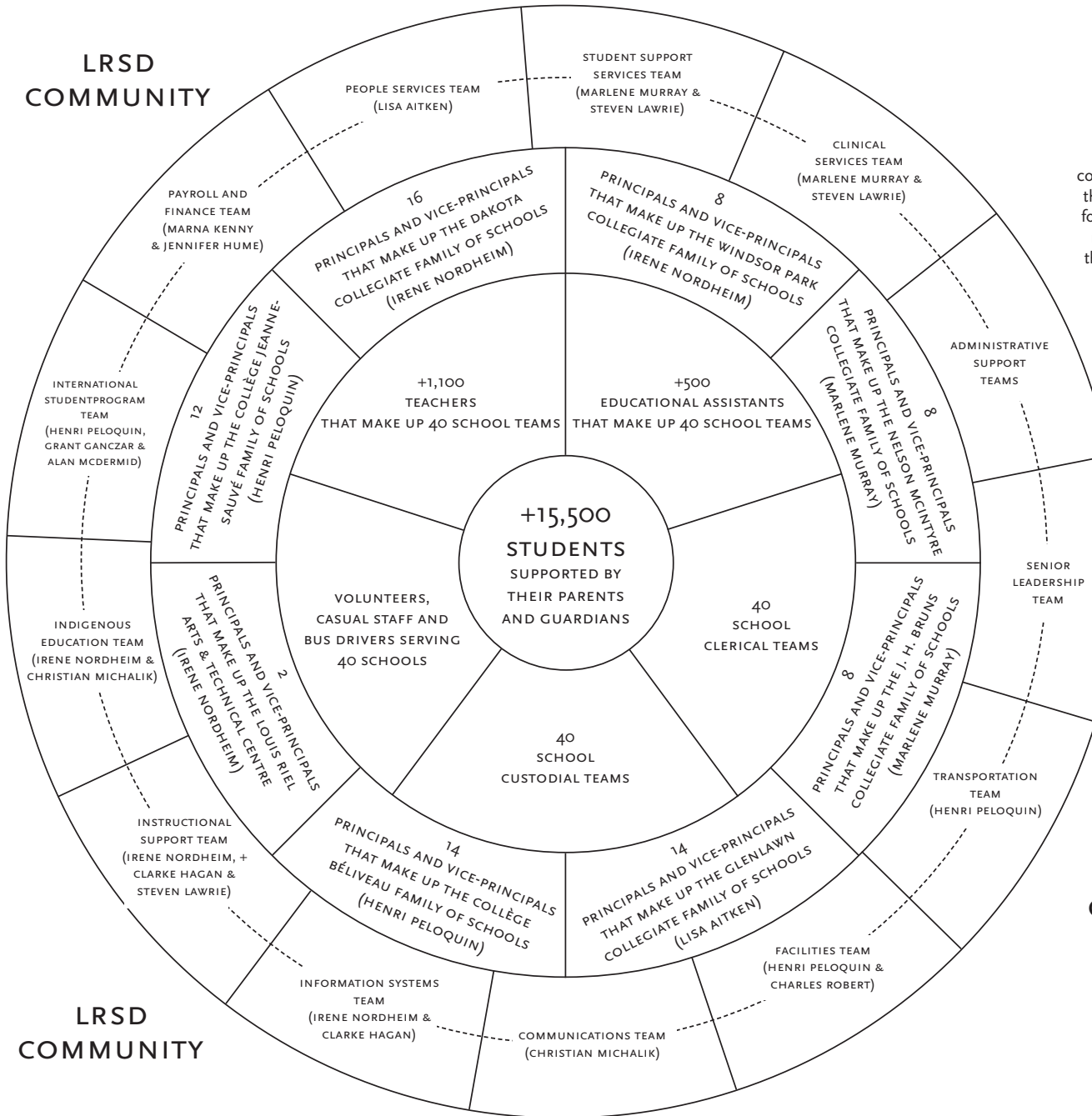
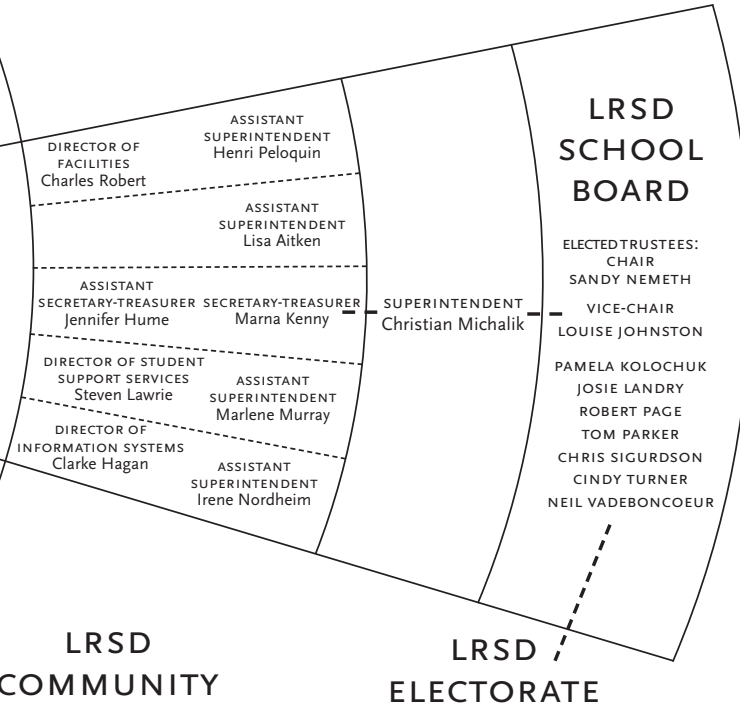


**LRSD
COMMUNITY**



**LRSD ORGANIZATIONAL CHART:
SUPPORTING STUDENT LEARNING**

LRSD strives to place the care and support of students at the centre of everything we do. This organizational chart reflects that focus, while also incorporating Indigenous conceptualizations of leadership as a circle that includes everyone. It is important to note that the LRSD School Board is connected to this circle and to the LRSD community and forms the foundation of the democratic inclusion of the community into LRSD decision-making processes, along with municipal, provincial and federal government partners, the Louis Riel Teachers' Association, CUPE Local 4642 and Parent Advisory Councils. As stated in the [Public Schools Act](#), public education is a shared responsibility between school boards, and the Minister of Education.



**LRSD
COMMUNITY**